

Phone: 916.683.7111
Fax: 916.691.3168

Web: www.elkgrovecity.org

8401 Laguna Palms Way
Elk Grove, California 95758



Modification or Addition to Improvement Standards and Details

Modification Number: **2013-01**

Effective Date: August 2, 2013

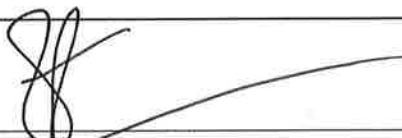
Modification:

1. Amend Standard Drawing Nos. SL-4 and SL-5 to include provisions for filling in the pull boxes with controlled density backfill. The amended standard drawings are attached. Projects with preconstruction meetings prior to effective date are not subject to this modification.

Effect of Modification:

1. To deter the theft of copper wiring.

Request for Modification Initiated By:


Construction Manager

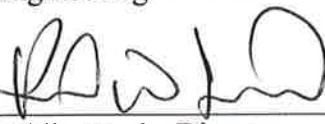
4/3/14
Date

Modification Reviewed for Conformity and
Consistency to Standards:


Engineering Services Manager

4/3/14
Date

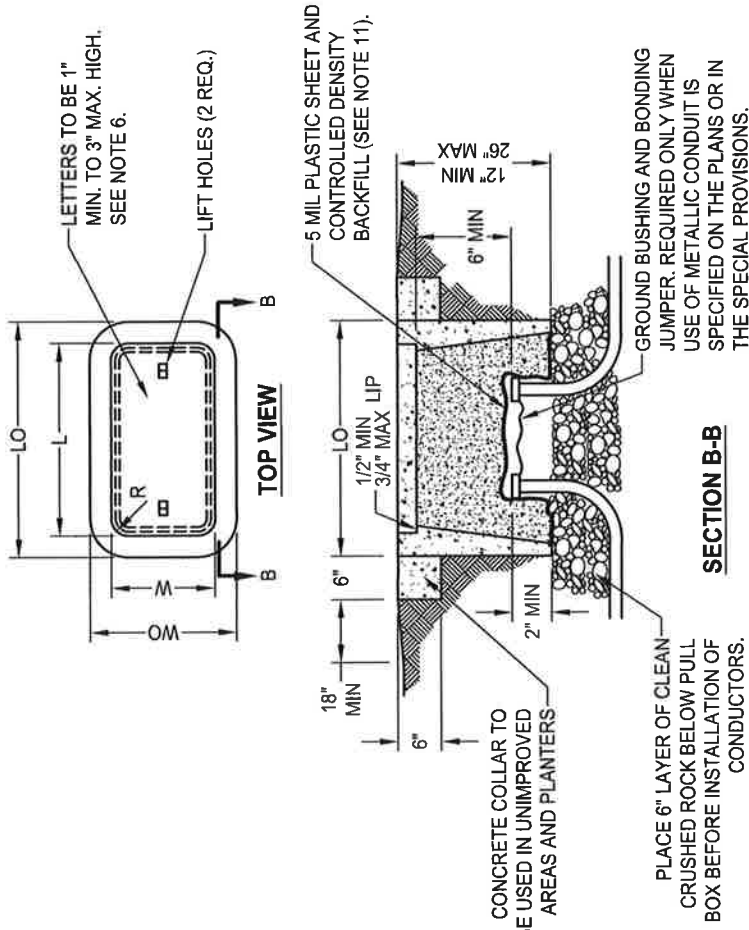
Modification to Improvement Standards Approved:


Public Works Director

4/4/14
Date

PULL BOX NO.	REINFORCED CONCRETE BOX		COMPOSITE BOX		REINFORCED CONC. OR COMPOSITE COVER					
	MIN.** THICKNESS	MIN DEPTH BOX AND EXTENSION	LO	WO	MIN.** THICKNESS AND EXTENSION	L***	W***	R	EDGE THICKNESS	EDGE TAPER
3-1/2	1"	NO EXTENSION	20"	14"	5/16"	15-3/8"	10-1/8"	1-1/8"	1-3/4"	1/8"
5	1"	22"	28"	18"	5/16"	23-1/4"	13-3/4"	1-1/4"	2"	1/8"
5A	1"	22"	25-1/4"	15-3/4"	5/16"	20-5/8"	10-1/2"	1-1/4"	2"	1/8"
6	1-1/2"	24"	36"	23"	3/8"	30-5/8"	17-5/8"	1-1/4"	2"	1/8"

** EXCLUDING CONDUIT WEB *** TOP DIMENSION



APPROVED BY: *[Signature]*
CITY ENGINEER

DRAWING NUMBER
SL - 4

CITY OF ELK GROVE - PUBLIC WORKS
STANDARD PULL BOX

DATE:	NOT TO SCALE		
01/17/2007			
REVISION	BY	APPROVED	DATE
1	DC	BS	07/28/2010
2	DC	DW	01/08/2014

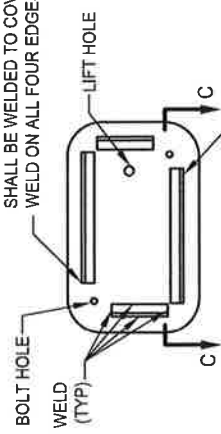
- NOTES:**
- IN UNIMPROVED AREAS, THE TOP OF PULL BOXES SHALL BE PLACED 0.10 FOOT ABOVE THE SURROUNDING GRADE OR, WHEN ADJACENT TO A CURB, FLUSH WITH THE TOP OF THE CURB. THE SURROUNDING GRADE SHALL BE RAMPED UP TO MATCH THE TOP OF THE CONCRETE COLLAR. UNLESS OTHERWISE NOTED, PULL BOXES SHOWN IN THE VICINITY OF SIDEWALK SHALL BE PLACED ADJACENT TO THE BACK OF SIDEWALK, AND PULL BOXES SHOWN ADJACENT TO POLES SHALL BE PLACED ON THE SIDE OF THE FOUNDATION FACING AWAY FROM TRAFFIC.
 - PLACEMENT OF PULL BOXES IN AREAS SUBJECT TO VEHICULAR TRAFFIC LOADS (INCLUDES TRAFFIC LANES, BIKE LANES, SHOULDERS, AND DRIVEWAYS) SHALL BE AVOIDED WHENEVER POSSIBLE. IF UNAVOIDABLE, THEN A TRAFFIC RATED PULL BOX WITH STEEL TRAFFIC COVER SHALL BE USED. SEE STANDARD DRAWING SL-5.
 - PULL BOXES SHALL NOT BE PLACED WITHIN THE BOUNDARIES OF SIDEWALKS AND SIDEWALK RAMPS.
 - PULL BOXES SHOULD NOT BE PLACED WITHIN PLANTER AREAS WHENEVER POSSIBLE.
 - PULL BOX COVERS SHALL BE MARKED AS FOLLOWS:
 - "TRAFFIC SIGNAL" TRAFFIC SIGNAL CIRCUITS WITH OR WITHOUT STREET LIGHTING CIRCUITS.
 - "STREET LIGHTING" STREET LIGHTING CIRCUITS WHERE NO VOLTAGE IS ABOVE 600V.
 - "STREET LIGHTING-HIGH VOLTAGE" STREET LIGHTING CIRCUITS WHERE VOLTAGE IS ABOVE 600V.
 - "SERVICE" SERVICE CIRCUITS BETWEEN SERVICE POINT AND SERVICE DISCONNECT.
 - "SPRINKLER CONTROL" SPRINKLER CONTROL CIRCUITS, 50 VOLTS OR LESS.
 - "IRRIGATION" CIRCUIT FOR IRRIGATION CONTROLLER, 120 VOLTS OR MORE.
 - "RAMP METER" RAMP METER CIRCUITS.
 - "COUNT STATION" COUNT AND/OR SPEED MONITOR CIRCUITS.
 - "TELEPHONE" TELEPHONE SERVICE.
 - "TOS COMMUNICATIONS" TOS COMMUNICATIONS TRUNK LINE.
 - "TOS POWER" TOS POWER.
 - "TDC POWER" TELEPHONE DEMARCATION CABINET POWER.
 - "SIGNAL INTERCONNECT" TRAFFIC SIGNAL INTERCONNECT CIRCUIT.
 - COVERS SHALL FIT FLUSH WITH THE TOP OF PULL BOXES. THERE SHALL BE 1/8" MAXIMUM CLEARANCE ALL AROUND BETWEEN COVERS AND PULL BOX OPENINGS.
 - ALL COVERS AND BOXES SHALL BE INTERCHANGEABLE WITH CALIFORNIA STANDARD MALE AND FEMALE GAUGES. WHEN INTERCHANGED WITH STANDARD MALE OR FEMALE GAUGE, THE TOP SURFACES SHALL BE FLUSH WITHIN 1/8 INCH.
 - THE TOP EDGES OF ALL CONCRETE COVER AND PULL BOXES SHALL HAVE A 1/4" MINIMUM RADIUS.
 - STACKING OF PULL BOXES IS PERMITTED (TWO PULL BOXES MINIMUM).
 - STEEL REINFORCING SHALL BE A REGULARLY USED IN THE STANDARD PRODUCTS OF THE RESPECTIVE MANUFACTURER.
 - PULL BOXES FOR STREET LIGHTING, UPON COMPLETION OF BURN TEST, SHALL BE FILLED WITH CONTROLLED DENSITY BACKFILL, PER CITY OF ELK GROVE CONSTRUCTION SPECIFICATIONS SECTION 50-15. A 5 MIL PLASTIC SHEET SHALL COVER THE CONDUITS/WIRES PRIOR TO POURING OF BACKFILL TO A DEPTH OF TWO (2) INCHES OVER THE CONDUITS.

PULL BOXES SHALL BE PLACED BEHIND THE SIDEWALK OR IN THE PLANTER AREA WHENEVER POSSIBLE. TRAFFIC RATED BOXES AND COVERS SHALL BE USED IF A PULL BOX MUST BE INSTALLED IN THE SIDEWALK OR DRIVEWAY.

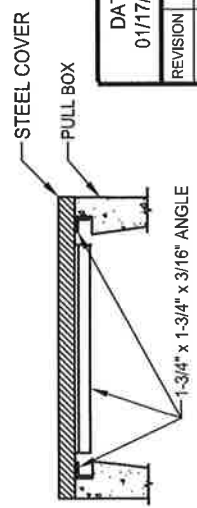
NOTES:

1. STEEL COVER SHALL HAVE EMBOSSED NON-SKID PATTERN.
2. STEEL REINFORCING SHALL BE AS REGULARLY USED IN THE STANDARD PRODUCTS OF THE RESPECTIVE MANUFACTURER.
3. PULL BOX COVERS SHALL BE MARKED AS DESCRIBED IN NOTE 5 ON STANDARD DRAWING SL-4. MARKING SHALL BE APPLIED TO EACH COVER PRIOR TO GALVANIZING BY BEAD WELDING THE LETTERS ON THE COVERS. THE LETTERS SHALL BE RAISED AT LEAST 3/32 INCH.
4. BONDING JUMPER FOR COVER SHALL BE A MIN. OF 36" LONG. WHEN NON-METALLIC CONDUIT IS USED, THE BONDING JUMPER FOR THE COVER SHALL BE SPLICED TO THE BOND WIRE IN THE CONDUITS. WHEN THE USE OF METALLIC CONDUIT IS SPECIFIED ON THE PLANS OR IN THE SPECIAL PROVISIONS, THE BONDING JUMPER FOR THE COVER SHALL BE CONNECTED TO THE CONDUIT GROUND BUSHING, AND THE CONDUITS SHALL BE BONDED TOGETHER WITH GROUND BUSHINGS AND A BONDING JUMPER.
5. CONDUITS SHALL ENTER AT BOTTOM OF PULL BOX AS SHOWN IN THE DRAWING.
6. PULL BOXES FOR STREET LIGHTING. UPON COMPLETION OF BURN TEST, SHALL BE FILLED WITH CONTROLLED DENSITY BACKFILL PER CITY OF ELK GROVE CONSTRUCTION SPECIFICATIONS SECTION 50-15. A 5 MIL. PLASTIC SHEET SHALL COVER THE CONDUITS/WIRES PRIOR TO POURING OF BACKFILL, TO A DEPTH OF TWO (2) INCHES OVER THE CONDUITS.

1-3/4" x 1-3/4" x 3/16" ANGLE WELDED ALONG THE ENTIRE PERIMETER OF COVER EXCEPT AT RADIUS CORNERS AND BOLT HOLES. 1-3/4" FLAT SURFACE SHALL BE WELDED TO COVER WITH A CONTINUOUS WELD ON ALL FOUR EDGES.



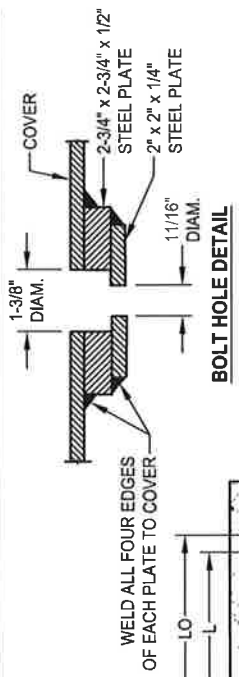
THIS 1-3/4" FLAT SURFACE TO BE AGAINST INSIDE EDGE OF PULL BOX OPENING (TYP)



**SECTION C-C
COVER DETAIL**

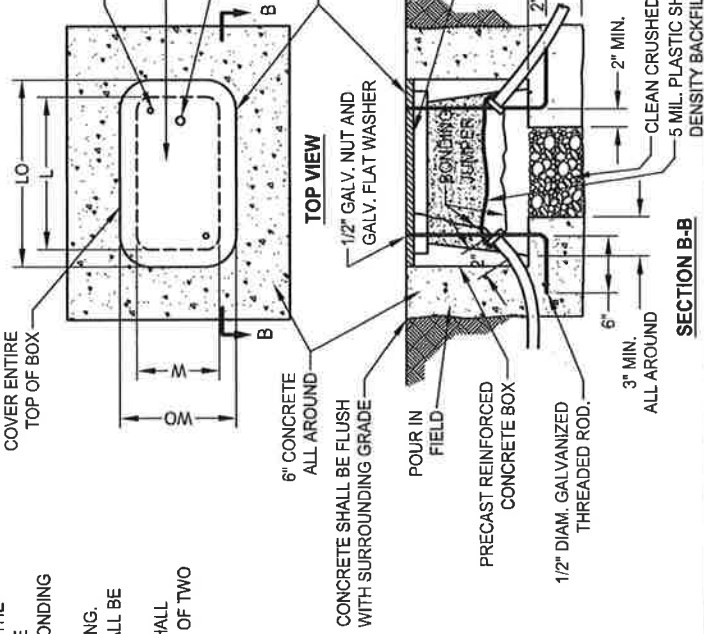
REINFORCED CONCRETE BOX					
PULL BOX No.	MIN.** THICKNESS	MIN. DEPTH BOX AND EXTENSION	LO	WO	W
3-1/2	1"	NO EXTENSION	20"	14"	10"±
5	1"	22"	28"	18"	13-1/2"±
5A	1"	22"	25-1/4"	15-3/4"	10-1/2"±

** EXCLUDING CONDUIT WEB



BOLT HOLE DETAIL

COVER SHALL COVER ENTIRE TOP OF BOX
WELD ALL FOUR EDGES OF EACH PLATE TO COVER
1-3/8" DIAM.
COVER
2-3/4" x 2-3/4" x 1/2" STEEL PLATE
2" x 2" x 1/4" STEEL PLATE
11/16" DIAM.
BOLT HOLES SHALL MATCH STANDARD STUD BOLTS. SEE BOLT HOLE DETAIL.
LETTERS TO BE 1" MIN. TO 3" MAX. HIGH. SEE NOTE 3.
1/2" DIAM. LIFT HOLE



TOP VIEW

SECTION B-B

6" CONCRETE ALL AROUND
CONCRETE SHALL BE FLUSH WITH SURROUNDING GRADE
1/2" GALV. NUT AND GALV. FLAT WASHER
POUR IN FIELD
PRECAST REINFORCED CONCRETE BOX
1/2" DIAM. GALVANIZED THREADED ROD.
ALL AROUND
3" MIN.
2" MIN.
6"
6"
2" MIN.
1/4" STEEL PLATE COVER, GALVANIZED AFTER FABRICATION AND SET FLUSH WITH CONCRETE.
WELD ANGLES TO COVER (4 REQ.) SEE COVER DETAIL.
CLEAN CRUSHED ROCK
5 MIL. PLASTIC SHEET AND CONTROLLED DENSITY BACKFILL (SEE NOTE 6).

DATE:	NOT TO SCALE	CITY OF ELK GROVE - PUBLIC WORKS	
01/17/2007		APPROVED BY:	
REVISION	BY	APPROVED	DATE
1	DC	BS	07/29/2010
2	DC	DW	01/08/2014

APPROVED BY: *[Signature]*
CITY ENGINEER: *[Signature]*

DRAWING NUMBER: **SL-5**

