

Table 3-4: Proposed Wastewater System Impact Fee Eligible Capital Projects

No.	Description of Project	Capital Cost
EXISTING		
A	Bee Creek Interceptor Phase 1	\$3,600,939
B	Royder/Live Oak Sewer Service	\$1,691,256
C	2016 Impact Fee Study	\$50,000
Existing Project Sub-total		\$5,342,195
PROPOSED		
1	54/60-inch Bee Creek Interceptor Phase 2	\$7,060,400
2	42/48-inch Bee Creek Interceptor Phase 3	\$5,511,400
3	54-inch Lick Creek Interceptor Phase 1	\$2,756,600
4	54-inch Lick Creek Interceptor Phase 2	\$8,739,500
5	Expand Lick Creek WWTP Capacity to 5 MGD	\$29,949,000
6	42/48-inch Medical District Interceptor Phase 1	\$9,319,500
7	4 MGD Diversion Lift Station and 24-inch Force Main	\$12,024,500
8	42-inch Northeast Interceptor Phase 1	\$3,501,600
9	48-inch Northeast Interceptor Phase 2	\$2,577,900
10	36-inch Northeast Interceptor Phase 3	\$5,587,400
11	24/30-inch Northeast Interceptor Phase 4	\$3,427,700
12	30/36-inch Southwood Valley Interceptor Phase 1	\$3,286,400
13	15/18/24-inch Southwood Valley Interceptor Phase 2	\$1,961,400
14	Hensel Park Lift Station Expansion to 6 MGD	\$4,682,500
15	Expand Lick Creek WWTP Capacity to 8 MGD	\$24,717,000
16	Diversion Lift Station Expansion to 10 MGD	\$2,496,000
17	24/27-inch Alum Creek Interceptor	\$9,018,800
18	3 MGD Peach Creek Lift Station and 16-inch Force Main	\$4,165,200
19	12/21/24-inch Royder Road Interceptor	\$4,086,500
20	18/21/24-inch Medical District Interceptor Phase 2	\$3,456,900
Proposed Project Sub-total		\$148,326,200
Total Capital Improvements Cost		\$153,668,395

FIGURE 3-2
CITY OF COLLEGE STATION
WASTEWATER SYSTEM
IMPACT FEE CIP PROJECTS

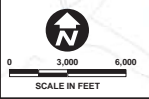
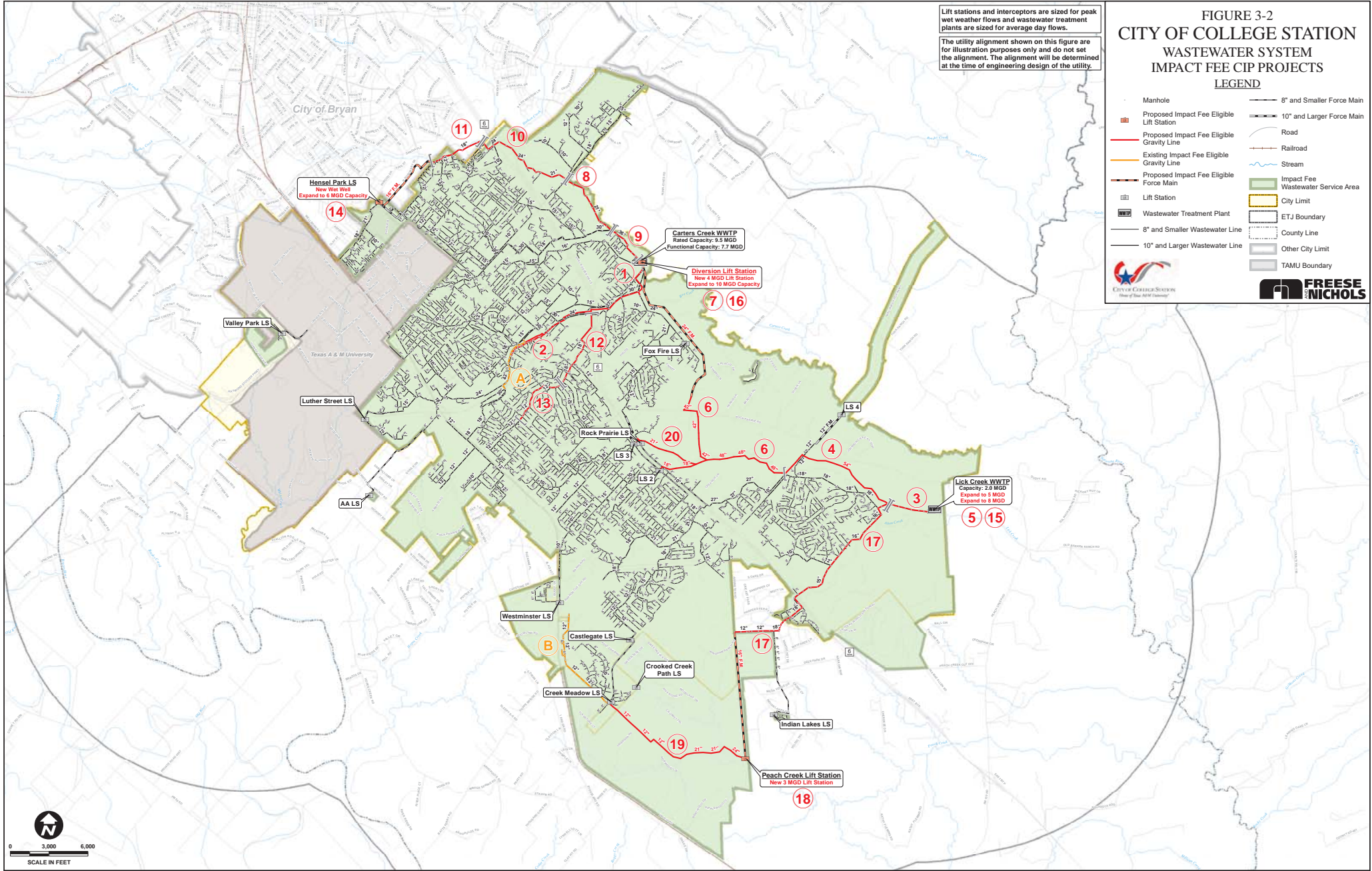
LEGEND

- Manhole
- Proposed Impact Fee Eligible Lift Station
- Proposed Impact Fee Eligible Gravity Line
- Existing Impact Fee Eligible Gravity Line
- Proposed Impact Fee Eligible Force Main
- Lift Station
- Wastewater Treatment Plant
- 8" and Smaller Wastewater Line
- 10" and Larger Wastewater Line
- 8" and Smaller Force Main
- 10" and Larger Force Main
- Road
- Railroad
- Stream
- Impact Fee Wastewater Service Area
- City Limit
- ETJ Boundary
- County Line
- Other City Limit
- TAMU Boundary



Lift stations and interceptors are sized for peak wet weather flows and wastewater treatment plants are sized for average day flows.

The utility alignment shown on this figure are for illustration purposes only and do not set the alignment. The alignment will be determined at the time of engineering design of the utility.



Small text at the bottom left corner, likely containing project details or contact information.